

AQUATRACK™

Hydrophilic Nitinol Guidewire

Instant response
through the turns

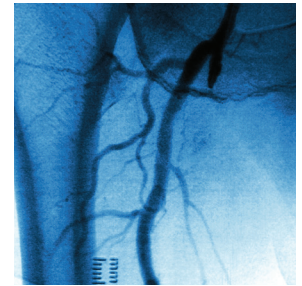
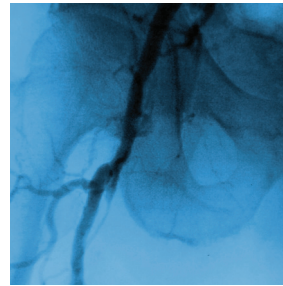
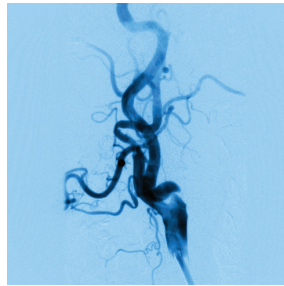
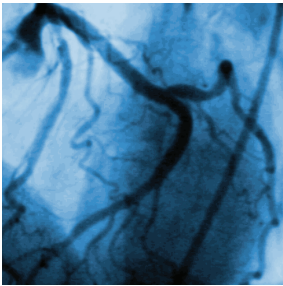


Cordis™

Instant response through the turns

AQUATRACK™ Hydrophilic Nitinol Guidewire

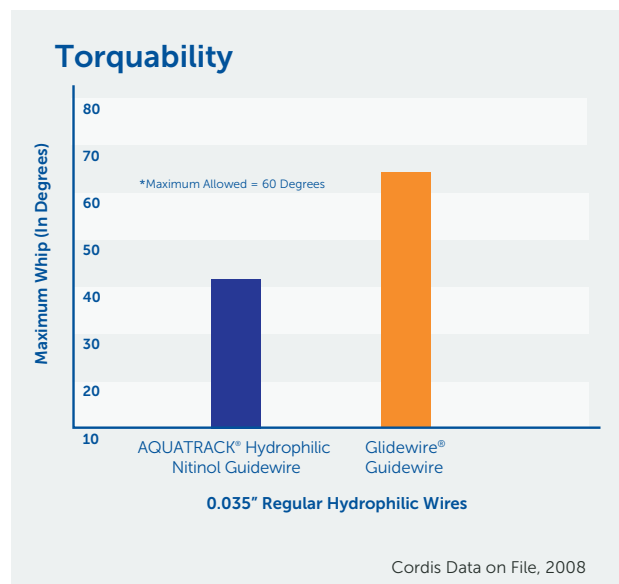
Easing access, however tortuous the anatomy



True one to one torque response*

Compared with the Terumo Glidewire® Guidewire, AQUATRACK™ Hydrophilic Nitinol Guidewire provides:

- More precise control for vessel selection and lesion crossability
- Immediate response, with significantly less whip



Instant response through the turns

Lasting lubricity*

The AQUATRACK™ Hydrophilic Nitinol Guidewire jacket and hydrophilic coating:

- Minimise the push force required for wire deployment
- Lead to better lubricity retention for longer cases with less wiping of the wire
- Allow easier reinsertion after wiping due to controlled swelling of the coating

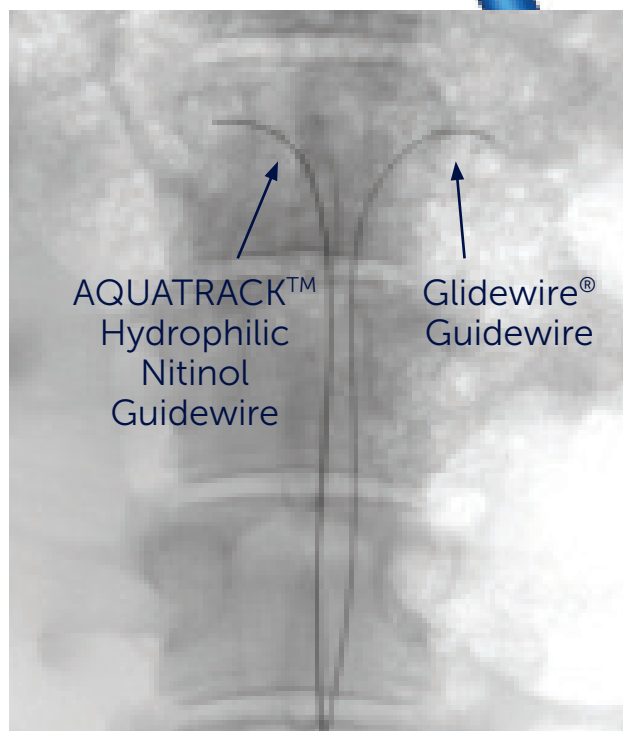
The Photolink® hydrophilic coating process:

- Creates a strong bond between the lubricious coating and the wire surface
- Reduces the possibility of embolisation from detached jacket debris by chemical bonding of the jacket to the wire

Superior radiopacity*

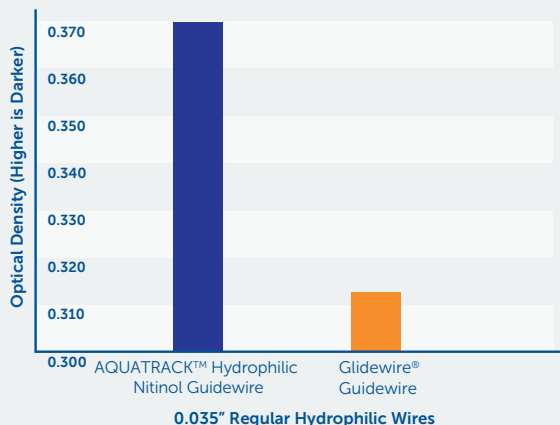
Compared with the Terumo Glidewire® Guidewire, AQUATRACK™ Hydrophilic Nitinol Guidewire:

- Shows up significantly darker under fluoroscopy due to increased radiopaque material in polymer jacket
- May allow faster and more accurate procedures with fewer complications due to increased visibility



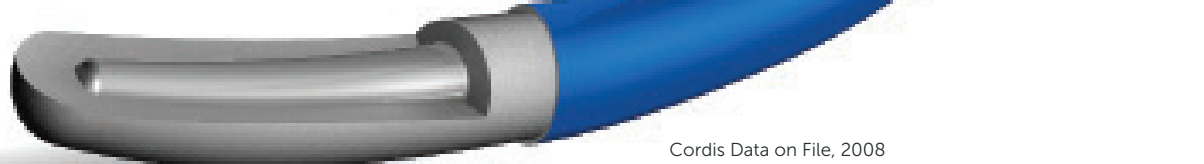
Based on an in vivo animal testing

Visualisation



Cordis Data on File, 2008

Hydrophilic lubricity.
Bare wire torque.



Cordis Data on File, 2008

AQUATRACK™


Hydrophilic Nitinol Guidewire

Ordering Information

AQUATRACK™ Hydrophilic Nitinol Guidewire				
Product code	Length	Stiffness	Taper	Tip
C3515-RSS	150cm	Regular	Short	Straight
C3515-RSA	150cm	Regular	Short	Angled*
C3515-SSA	150cm	Stiff	Short	Angled*
C3518-RSS	180cm	Regular	Short	Straight
C3518-RSA	180cm	Regular	Short	Angled*
C3518-SSA	180cm	Stiff	Short	Angled*
C3526-SSS	260cm	Stiff	Short	Straight
C3526-SSA	260cm	Stiff	Short	Angled*
C3526-RSA	260cm	Regular	Short	Angled*






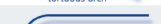
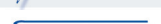

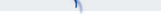

0.035" Packed 5 pcs per box

*Angled = 60 degree angle



Torque device packaged with every AQUATRACK™ Hydrophilic Nitinol Guidewire

The AQUATRACK™ Hydrophilic Nitinol Guidewire can be used with other Cordis product family. The products listed hereunder are only a selection. Please contact your local sales representative for further information on product compatibilities.

Selected Cordis TEMPO AQUA™ Diagnostic Catheters				
Shape	Length	4F	5F	
Berenstein (BERN)	100cm	452-413H0	452-513H0	
Cobra Child I (C1)	65cm	452-442V0	452-542V0	
Cobra Small Adult (C2)	65cm	452-443V0	452-543V0	
Cobra Small Adult (C2)	80cm	452-443S0		
Headhunter I (H1)	100cm	452-435H0	452-535H0	
Multipurpose Adult I (MPA1)	100cm	452-407H0	452-507H0	
Sidewinder Simmons Technique I (SIM1)	100cm	452-430H0	452-530H0	
Sidewinder Simmons Technique II	100cm	452-431H0	452-531H0	
Vertebral (VERT)	100cm	452-414H0	452-514H0	
Straight (STR)	125cm	SRD 6682		

0.038" Guidewire acceptance. Packed 1 per box.

For Healthcare Professionals Only.

Important information: Prior to use, refer to the instructions for use supplied with this device for indications, contraindications, side effects, suggested procedure, warnings and precautions. As part of its continuous product development policy, Cordis reserves the right to change product specifications without prior notification. Please contact your Cordis representative for additional product availability information. CORDIS, Cordis LOGO, TEMPO AQUA and AQUATRACK are trademarks of Cordis and may be registered in the US and/or in other countries. All other marks are the property of their respective owners. © 2022 Cordis. All Rights Reserved. 100615379 11/2022

CE
2797

Cordis™