

*Cordis*<sup>™</sup>

# Cordis Carotid Portfolio

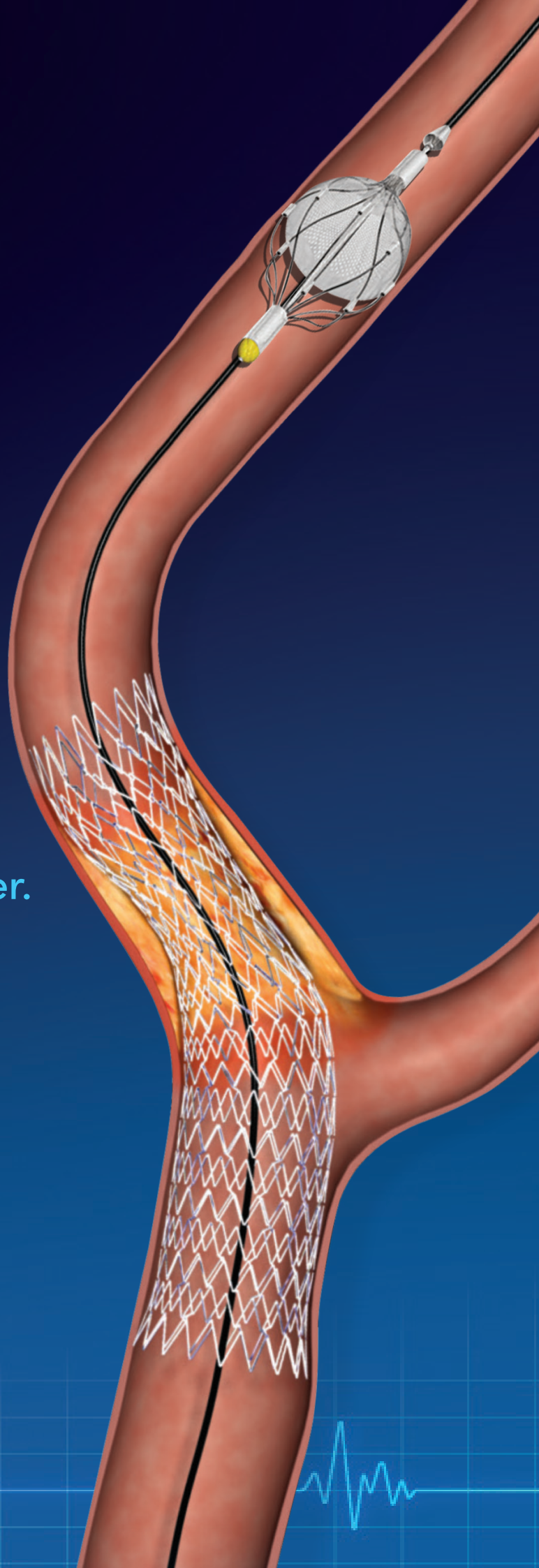
PRECISE PRO RX<sup>™</sup>  
Carotid Stent

ANGIOGUARD<sup>™</sup> RX  
Emboli Capture Guidewire

AVIATOR<sup>™</sup> Plus  
PTA Dilatation Catheter

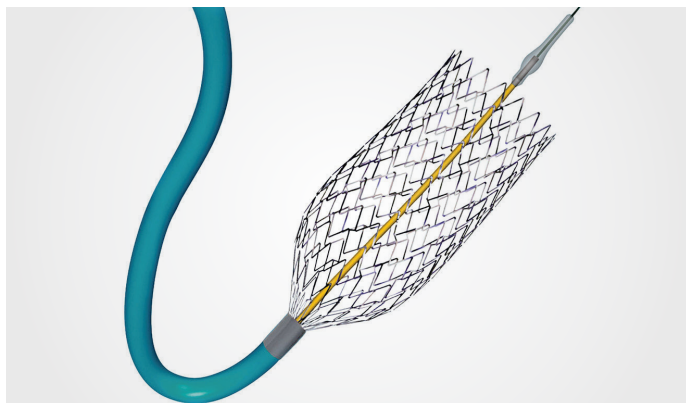
---

Conformability like no other.  
Design matters.



# Cordis Carotid Portfolio

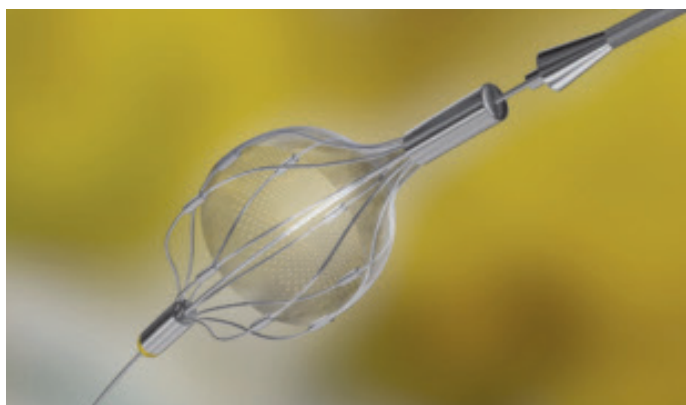
Cordis carotid portfolio is designed to suit challenges of carotid artery stenting procedures.<sup>1</sup>



## PRECISE PRO RX™ CAROTID STENT

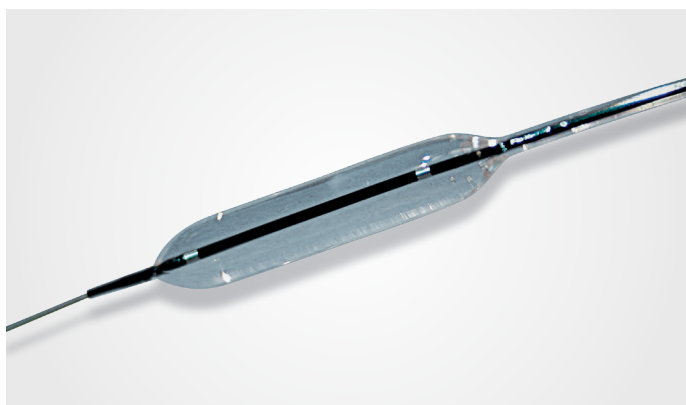
A unique design for enhanced contourability, increased longitudinal stability and uniform scaffolding.

- 36 struts / 6 alternating bridges
- 1 mm flare at stent end
- Peak-to-valley design



## ANGIOGUARD™ RX EMBOLIC PROTECTION DEVICE (EPD)

The short landing zone and small pore size work in unique combination with the PRECISE PRO RX™ Stent to offer greater control and ease of use.



## AVIATOR™ PLUS PTA DILATATION CATHETER

Built for speed with enhanced deliverability and crossability. Indicated for carotid and renal peripheral endovascular interventions.

1. Technical challenges in a program of carotid artery stenting H. Michael Choi, MD,<sup>a</sup> Robert W. Hobson II, MD,<sup>a,b</sup> Jonathan Goldstein, MD,<sup>b</sup> Elie Chakhtoura, MD,<sup>b</sup> Brajesh K. Lal, MD,<sup>a</sup> and B. Haser, MD,<sup>a,b</sup> Salvador A. Cuadra, MD,<sup>a</sup> Frank T. Padberg, Jr, MD,<sup>a</sup> and Zafar Jamil, MD,<sup>a,b</sup> Newark, NJ; (J Vasc Surg 2004;40:746-51.)

# Carotid Artery Stenting

A procedure like no other requires a proven solution.

The art of stenting complex carotid vessels requires a skill like no other. It also requires products specifically designed for this tortuous region.<sup>1</sup> Rigid stents may cause kinking and unnatural wall apposition, potentially posing an increased risk of complications.<sup>2</sup>

Choose the stent that conforms to the supra-aortic anatomy and preserves the angulation between the Common Carotid Artery (CCA), the Internal Carotid Artery (ICA).

The Cordis **PRECISE PRO RX™** Carotid Stent, with its multi-segmented, auto-tapering design, offers one of the best combinations of conformability and wall apposition.

*The PRECISE PRO RX™ Carotid Stent, coupled with the short landing zone of the ANGIOGUARD™ RX EPD, creates a combination that's suitable for virtually any CAS procedure.\**

## Cordis carotid portfolio, a proven choice

### CHALLENGES OF CAROTID ARTERY STENTING PROCEDURES<sup>3</sup>

- Complex carotid anatomy
- Abrupt changes in vessel diameter
- Severe angulations
- Arch type degree variances
- Bifurcation challenges

### WHY CORDIS CAROTID PORTFOLIO?

- Ideal for challenging arterial landscapes
- Durable outcomes
- Unique autotapering
- Self centering embolic design protection basket

\* Please refer to Precise Pro RX™ Instructions for Use and CMS carotid artery stenting guidelines at <https://www.cms.gov/medicare-coverage-database/view/ncacal-decision-memo.aspx?proposed=N6NCAId=157>

1. Safety and effectiveness have not been established for patients with known tortuosity precluding the use of catheter-based techniques.

2. *Conformity of Carotid Stents with Vascular Anatomy: Evaluation in Carotid Models*, AJNR Am J Neuroradiol 25:604-607, April 2004

3. Technical challenges in a program of carotid artery stenting H. Michael Choi, MD,a Robert W. Hobson II, MD,a,b Jonathan Goldstein, MD,b Elie Chakhtoura, MD,b Brajesh K. Lal, MD,a aul B. Haser, MD,a,b Salvador A. Cuadra, MD,a Frank T. Padberg, Jr, MD,a and Zafar Jamil, MDa,b Newark, NJ; (J Vasc Surg 2004;40:746-51.)

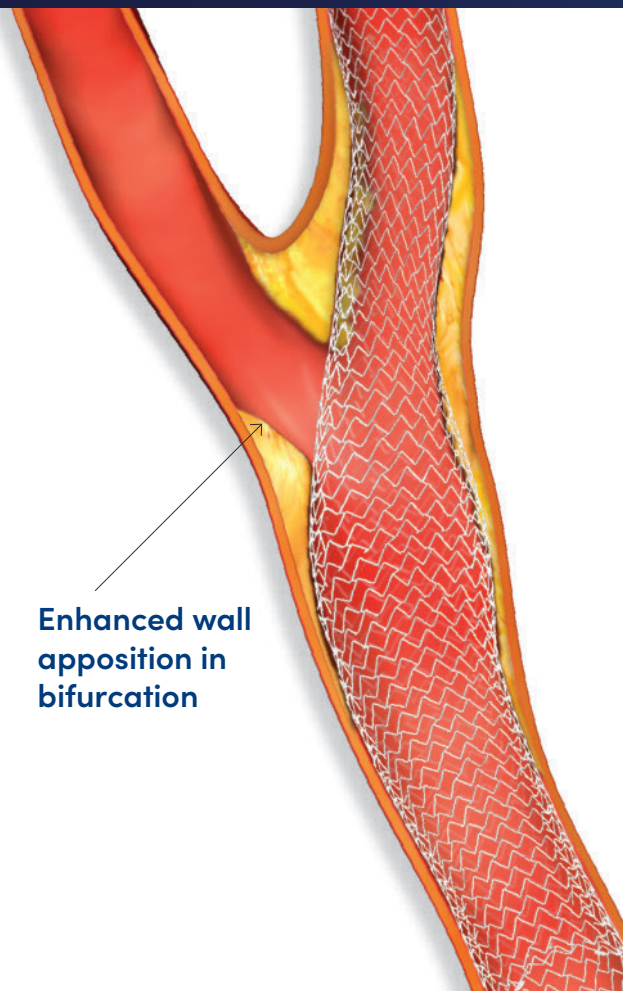
# PRECISE PRO RX™ Carotid Stent

**Simplicity of use, precision placement,  
and proven outcomes.**

With its unique peak-to-valley design and segmented micromesh geometry, the PRECISE PRO RX™ Carotid Stent provides simplicity of use, autotapering and excellent flexibility through tortuous anatomical challenges.<sup>1</sup>

Feature	Benefit
Multi-segment design	Auto tapering
Micromesh geometry	Enhanced wall apposition
Peak-to-Valley design	Conformability

**Enhanced wall  
apposition in  
bifurcation**



## Unique autotapering design enhances conformability in bifurcation

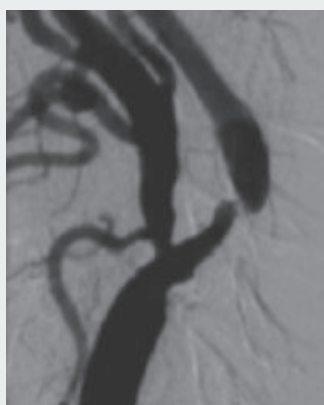
Autotapering design follows the vessel wall for enhanced conformability and wall apposition in the bifurcation, preserving complex angulations, and maintaining original wall anatomy.\*



2mm segments act as individual stents.



Excellent wall apposition.

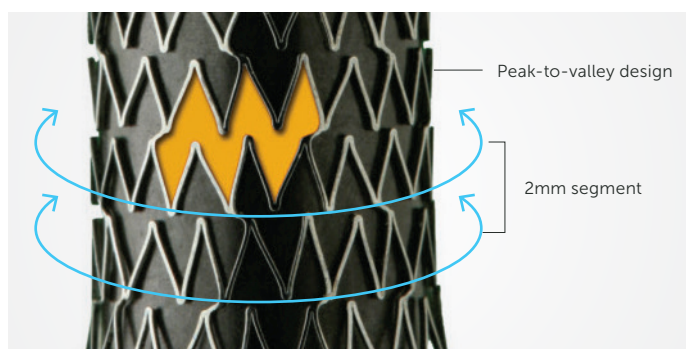


Before and after use of PRECISE PRO RX™ Carotid Stent, showing enhanced conformability to original anatomy.

1. Conformity of Carotid Stents with Vascular Anatomy: Evaluation in Carotid Models, AJNR Am J Neuroradiol 25:604-607, April 2004  
\* Stents in Bifurcation Aid Test Report, March 4, 2007.



# Cordis Carotid Portfolio



## The Design Difference

Unique design reduces fish scaling and kinking in the bend, preserving the complex angulation between the CCA and ICA.

## PRECISE PRO RX™ Carotid Stent offers:

### SIMPLICITY OF USE

- Autotapering provides precision guidance and remarkable placement accuracy
- Excellent flexibility
- Rapid exchange technology permits a single operator procedure

### MICRO-MESH

### MULTI-SEGMENTED DESIGN

- Each 2mm segment acts as its own stent to contour against the original wall anatomy
- Peak-to-valley micromesh design reduces recoil and kinking in the bends
- Maintains best-in-class wall apposition with gentle, consistent outward force on the vessel wall

## ANGIOGUARD™ RX

### Embolic Protection Device (EPD)

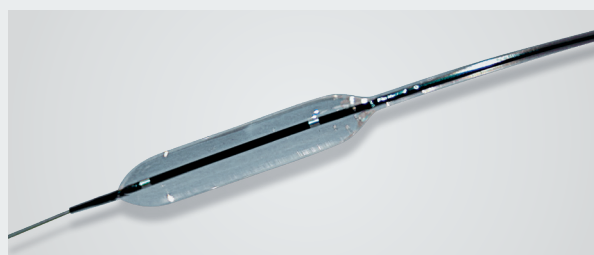
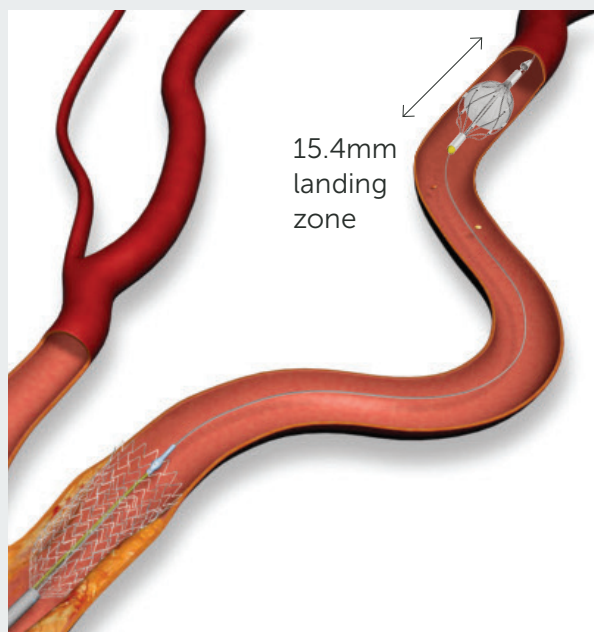
#### OFFERING ONE OF THE SHORTEST LANDING ZONES

- Self-centering basket design facilitates wall apposition and ease of use
- 100 micron pore size captures emboli, while maintaining continuous blood flow
- Excellent crossability (3.2F to 3.9F)
- Available in medium and extra support configurations

## AVIATOR™ Plus PTA Dilatation Catheter

#### FEATURING DURALYN™ BALLOON MATERIAL

- Rapid inflation (avg. 3s) and deflation (avg. 5s) Times
- Low crossing profile\*
- Flexible, manicured tip
- 4F sheath fit\*\*
- Carotid artery indication



\*4 and 4.5mm sizes  
\*\*7mm sizes are 5F  
Cordis 2007 data on file

# Time After Time, Cordis Delivers Proven Results in Carotid Artery Stenting

An extensive body of clinical evidence is yet another advantage of the Cordis CAS system. From SAPHIRE, the first randomized high-risk trial, to the SAPHIRE WW registry, Cordis continues to deliver improved outcomes.

30 Day Outcomes	SAPHIRE (167 patients)	CASES-PMS* (1492 patients)	SAPHIRE WW (21,008 patients)
Major Ipsilateral Stroke	0.6%	1.2%	1.2%
Minor Ipsilateral Stroke	2.4%	1.9%	1.4%
Death or Stroke	4.2%	4.5%	4.1%

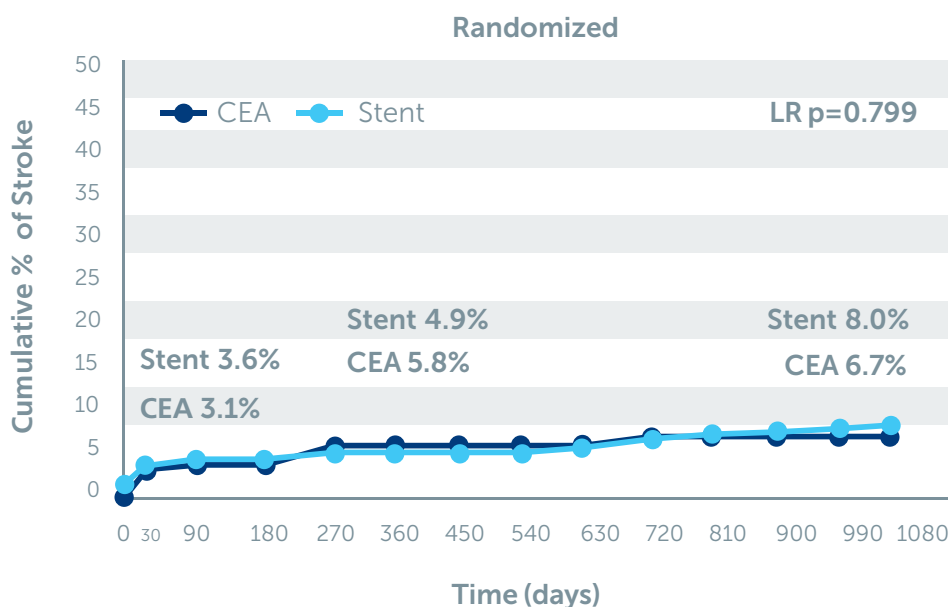
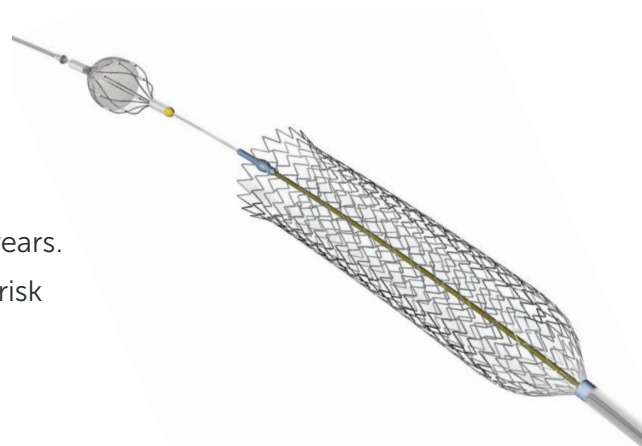
**OVER 21,000  
PATIENTS  
STUDIED**

\*Data for CASES-PMS included patients in the Continued Access Study. SAPHIRE twice published in NEJM<sup>1,4</sup> • CASES-PMS and SAPHIRE WW published in Catheterization and Cardiovascular Interventions<sup>2,3</sup>

## No statistical differences for CAS vs. CEA at 3 years.<sup>4</sup>

The Cordis PRECISE™ Carotid Stent and ANGIOGUARD™ EPD Guidewire System deliver durable, consistent outcomes out to 3 years.

CAS is a durable procedure out to 3 years, with similar long-term risk of stroke as CEA (8.0% vs. 6.7%, LR p=0.799) respectively.



**SAPHIRE**  
Cumulative % of Stroke to 30 days and Ipsilateral Stroke from 31 to 1080 Days

1. Yadav JS, Wholey MH, Kuntz RE, Fayad P, Katzen BT, Mishkel G, et al. *Protected Carotid-Artery Stenting Versus Endarterectomy in High-Risk Patients*. N Engl J Med 2004; 351: 493-1501.
2. Katzen BT, Criado FJ, Ramee SR, Massop DW, Hopkins LN, et al. *Carotid Artery Stenting with Emboli Protection Surveillance Study: Thirty-Day Results of the CASES-PMS Study* Catheterization and Cardiovascular Interventions 70:316-323 (2007).
3. Massop DW, Dave R, Metzger CD, Bachinsky W, Solis M, Shah R, Schultz G, Schreiber T, Ashchi M, Hibbard R, et al. *Stenting and Angioplasty with Protection in Patients at High-Risk for Endarterectomy: SAPHIRE Worldwide Registry First 2,001 Patients* Catheterization and Cardiovascular Interventions Published Online 15 Oct 2008.
4. GurmHS, Yadav JS, Fayad P, Katzen BT, Mishkel GJ, Bajwa TK, et al. *Long-term Results of Carotid Stenting Versus Endarterectomy in High-Risk Patients*. N Engl J Med 2008; 358: 1572-1579.

# Cordis Carotid Portfolio

Conformability like no other. Design matters.

## ORDERING INFORMATION

### PRECISE PRO RX™ CAROTID STENT

Stent Configuration Stent Ø x Length (mm)	Unconstrained Stent Ø (mm)	Unconstrained Stent Length (mm)	Min-Max vessel diameter (mm)	Catalogue Number Length of delivery system 135 cm
5 x 20	5	20	3-4	PC0520XCE
5 x 30	5	30	3-4	PC0530XCE
5 x 40	5	40	3-4	PC0540XCE
6 x 20	6	20	4-5	PC0620XCE
6 x 30	6	30	4-5	PC0630XCE
6 x 40	6	40	4-5	PC0640XCE
7 x 20	7	20	5-6	PC0720XCE
7 x 30	7	30	5-6	PC0730XCE
7 x 40	7	40	5-6	PC0740XCE
8 x 20	8	20	6-7	PC0820XCE
8 x 30	8	30	6-7	PC0830XCE
8 x 40	8	40	6-7	PC0840XCE
9 x 20	9	20	7-8	PC0920XCE
9 x 30	9	30	7-8	PC0930XCE
9 x 40	9	40	7-8	PC0940XCE
10 x 30	10	30	8-9	PC1030XCE
10 x 40	10	40	8-9	PC1040XCE

5mm-8mm stents 0.065" and 9mm-10mm stents 0.078" crossing profile. 135cm catheter working length. 0.014" guidewire acceptance.

### ANGIOGUARD™ RX EMBOLI CAPTURE GUIDEWIRE

Filter Basket Size (mm)	Vessel Diameter (mm)	Product Code (Extra Support)	Product Code (Medium Support)
5	3.5 to ≤ 4.5	501814RE	
6	4.5 to ≤ 5.5	601814RE	601814RM
7	5.5 to ≤ 6.5	701814RE	
8	6.5 to ≤ 7.5	801814RE	

Eight Nitinol struts. Available in medium and extra support. 100 micron basket pore size.

# Cordis Carotid Portfolio

Conformability like no other. Design matters.

## ORDERING INFORMATION

### AVIATOR™ PLUS PTA DILATATION CATHETER

Balloon OD x Length (mm x cm)	Nominal Pressure (atm)	Rated Burst Pressure (atm)	Sheath Fit (F)	Guiding Catheter Fit (F)	Catalogue Number
4 x 1.5	10	14	4	6	424-4015 W
4 x 2	10	14	4	6	424-4020 W
4 x 3	10	14	4	6	424-4030 W
4 x 4	10	14	4	6	424-4040 W
4.5 x 1.5	10	14	4	6	424-4515 W
4.5 x 2	10	14	4	6	424-4520 W
4.5 x 3	10	14	4	6	424-4530 W
4.5 x 4	10	14	4	6	424-4540 W
5 x 1.5	10	14	4	6	424-5015 W
5 x 2	10	14	4	6	424-5020 W
5 x 3	10	14	4	6	424-5030 W
5 x 4	10	14	4	6	424-5040 W
5.5 x 1.5	10	14	4	6	424-5515 W
5.5 x 2	10	14	4	6	424-5520 W
5.5 x 3	10	14	4	6	424-5530 W
5.5 x 4	10	14	4	6	424-5540 W
6 x 1.5	10	14	4	6	424-6015 W
6 x 2	10	14	4	6	424-6020 W
6 x 3	10	14	4	6	424-6030 W
6 x 4	10	14	4	6	424-6040 W
7 x 1.5	10	12	5	6	424-7015 W
7 x 2	10	12	5	6	424-7020 W
7 x 3	10	12	5	6	424-7030 W
7 x 4	10	12	5	6	424-7040 W

For Healthcare Professionals Only.

Important information: Prior to use, refer to the instructions for use supplied with this device for indications, contraindications, side effects, suggested procedure, warnings and precautions. As part of its continuous product development policy, Cordis reserves the right to change product specifications without prior notification.

Please contact your Cordis representative for additional product availability information.

CORDIS, Cordis LOGO, ANGIOGUARD, AVIATOR, PRECISE, PRECISE PRO RX and DURALYN are trademarks of Cordis and may be registered in the US and/or in other countries. © 2022 Cordis. All Rights Reserved. 100598961 02/2022



**Cordis**