



The Art of  
**Flow Restoration**

**IKAZUCHI ZERO<sup>™</sup>**  
Semi-Compliant PTCA Balloon

OVERVIEW

CROSSABILITY

LOW PROFILE

CASE STUDY

CODES

**IKAZUCHI ZERO™**  
Semi-Compliant PTCA Balloon

For Both Everyday and  
Complex CTO Cases\*

- Manufactured by Kaneka Corporation, one of Japan's leading providers of interventional devices.
- Part of the PTCA balloon portfolio of Cordis Company.
- **Durable Balloon with Japanese Technology**
- Engineered for small and narrow lesions.
- Engineered to treat CTO and challenging lesions.

\*CTO = Chronic Total Occlusion. Challenging lesions such as calcified or tortuous lesions may not be crossed with this catheter. The physician in charge of the procedure should determine whether this catheter is applicable based on his/her past experiences.

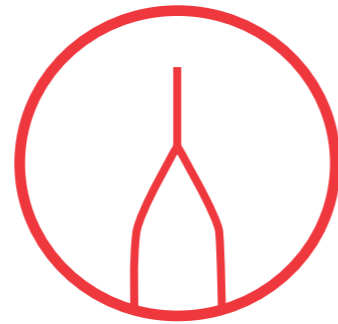


## Advancing Crossability Performance



### Hydrophilic Coating

Improves lubricity, thereby reducing resistance.



### Tapered Balloon Shape

Features a smooth tip, and a low profile engineered to help to prevent buckling and facilitate crossing.



### Low profile

- Engineered to facilitate crossing, including complex lesions.\*
- Minimized entry and balloon profiles with optimized pushability and tip flexibility.



### Tri-fold Wrapping Technology

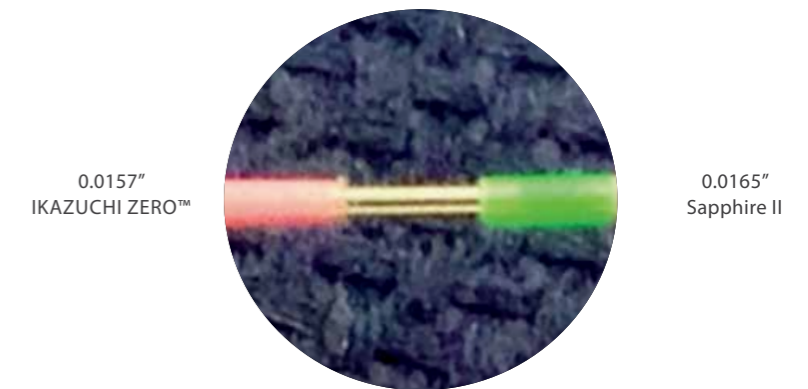
Optimized balloon-wrapping technology.



### Low-Profile 1 mm Diameter Pre-Dilatation Balloon Available

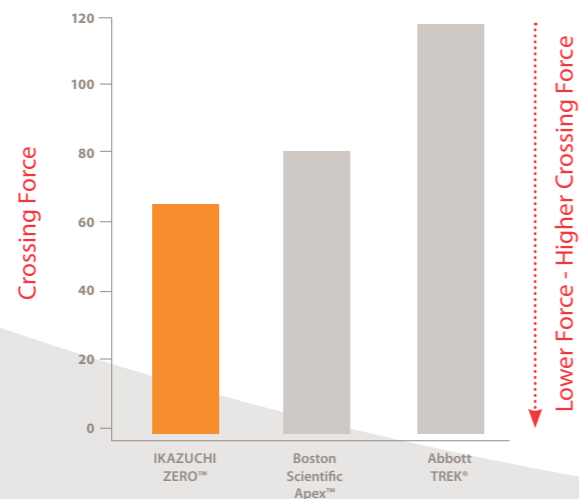
Cross confidently with the low profile (0.0157").

### IKAZUCHI ZERO™ vs Sapphire II



### Low Crossing Profile\*\*

Crossability of 3.0mm Pre-Dilatation Products\*\*



\*\* Cordis data on file, 2016

Kaneka IKAZUCHI ZERO™ 1.0mm	OrbusNeich Sapphire™ II 1.0mm	Abbott MINI TREK® 1.2mm	Medtronic Sprinter® Legend 1.25mm	Terumo Tazuna® 1.25mm	Boston Scientific Emerge™ 1.2mm
0.585mm (0.023 in)	0.59mm (0.0232 in)	0.66mm (0.0259 in)	0.66mm (0.0259 in)	0.66mm (0.0259 in)	0.67mm (0.0263 in)

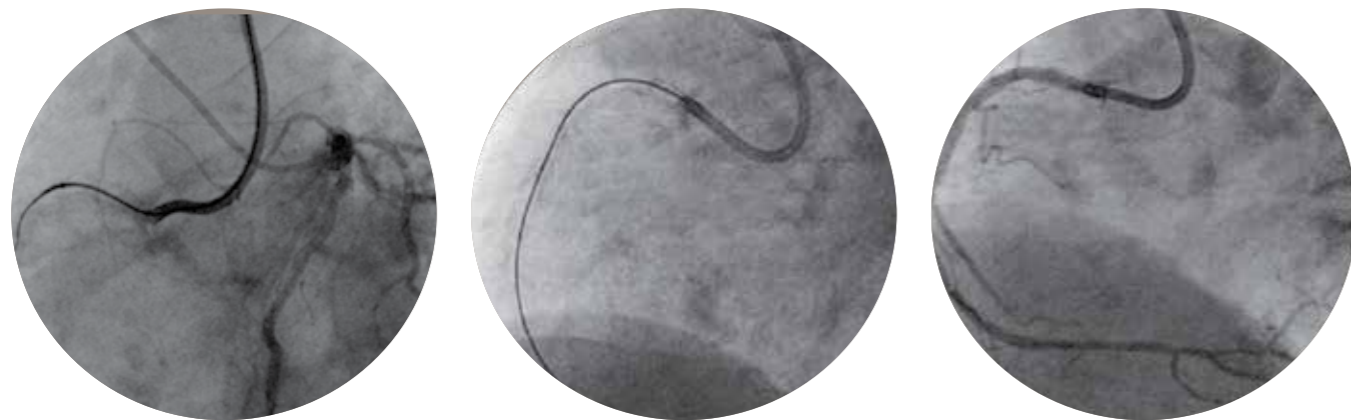
\* Challenging lesions such as calcified or tortuous lesions may not be crossed with this catheter. The physician in charge of the procedure should determine whether this catheter is applicable based on his/her past experiences.

\*\* Kaneka data on file

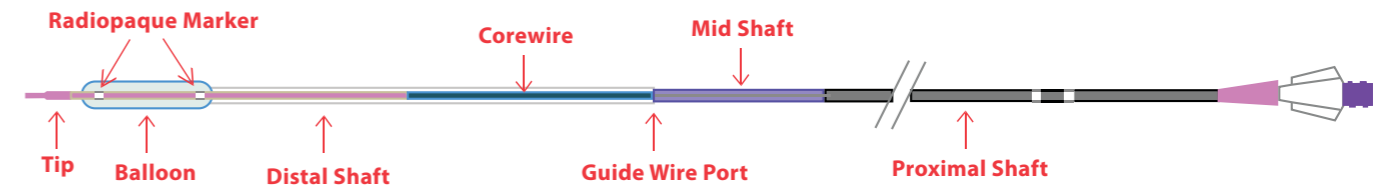
# Confidently Navigate Tortuous Anatomy

1.0  
mm

Chronic Total Occlusion Lesion of the RCA Successfully crossed\* with a 1.0mm IKAZUCHI ZERO™ Semi-Compliant PTCA Balloon



Facilitates treating various lesions, including bifurcations, CTOs, or those that require higher crossability.



Key Specifications	
Entry Profile:	0.40mm~0.43mm
RX Lumen Length:	25cm (ø1~1.5mm, 3.0mm~4.0mm) 27cm (ø2 ~ 2.75mm)
Effective Length:	146cm
Radiopaque Markers:	1 (ø1 ~ 1.5mm) 2 (ø2 ~ 4mm)
Balloon Folds:	2-fold (ø1 ~ 1.5mm) 3-fold (ø2 ~ 4mm)
Compatible GW Size:	0.014"
Distal Shaft OD:	2.3 F (ø1.2 ~ 2.75mm) 2.5 F (ø1mm, 3mm ~ 4.0mm)
Accessories:	Flushing tool and Catheter clip
Sizes Available:	ø1.00 ~ 4.00mm diameters* 6 ~ 30mm lengths
Platform:	Rapid Exchange

\* Please contact your Cordis Sales Representative for the full breadth of sizes and combinations (length/diameter) available.

## IKAZUCHI ZERO™ Semi-Compliant PTCA Balloon

PTCA = Percutaneous Transluminal Coronary Angioplasty, NP = Nominal Pressure, RBP = Rated Burst Pressure  
PCI = Percutaneous Coronary Intervention  
RCA= Right Coronary Artery

WARNINGS : STERILE product, to be for one-time use only. Do not reuse, reprocess or resterilize. Do not inflate the balloon exceeding the diameter of the blood vessel in the vicinity of the stenotic lesion. (The blood vessel may be damaged or ruptured.). Do not inflate the balloon to a pressure exceeding the rated burst pressure. (The balloon may burst and the debris may remain inside the body)

For Healthcare Professionals Only.

Important information: Prior to use, refer to the instructions for use supplied with this device for indications, contraindications, suggested procedure, warnings and precautions. As part of its continuous product development policy, Cordis reserves the right to change product specifications without prior notification. Please contact your Cordis representative for additional product availability information.

IKAZUCHI ZERO Balloon is manufactured by Kaneka Corporation and distributed by Cordis. CORDIS and the Cordis LOGO are trademarks of Cordis and may be registered in the US and/or in other countries. All other marks are the property of their respective owners.  
© 2023 Cordis. All Rights Reserved. 100570126-4 11/2023



\*Challenging lesions such as calcified or tortuous lesions may not be crossed with this catheter. The physician in charge of the procedure should determine whether this catheter is applicable based on his/her past experiences.

Balloon Diameter (mm)	Balloon Length (mm)	Sheath (F)	Nominal Pressure (atm)	Rated Burst Pressure (atm)	Reference Number
1.00	6	5	6	14	ZE-6-100P
1.00	8	5	6	14	ZE-8-100P
1.20	6	5	6	14	ZE-6-120
1.20	8	5	6	14	ZE-8-120
1.50	10	5	6	14	ZE-10-150
1.50	12	5	6	14	ZE-12-150
1.50	15	5	6	14	ZE-15-150
1.50	20	5	6	14	ZE-20-150
2.00	6	5	6	14	ZE-6-200
2.00	10	5	6	14	ZE-10-200
2.00	12	5	6	14	ZE-12-200
2.00	15	5	6	14	ZE-15-200
2.00	20	5	6	14	ZE-20-200
2.00	30	5	6	14	ZE-30-200
2.25	10	5	6	14	ZE-10-225
2.25	12	5	6	14	ZE-12-225
2.25	15	5	6	14	ZE-15-225
2.25	20	5	6	14	ZE-20-225
2.50	6	5	6	14	ZE-6-250
2.50	10	5	6	14	ZE-10-250
2.50	12	5	6	14	ZE-12-250
2.50	15	5	6	14	ZE-15-250
2.50	20	5	6	14	ZE-20-250
2.50	30	5	6	14	ZE-30-250
2.75	10	5	6	14	ZE-10-275
2.75	12	5	6	14	ZE-12-275
2.75	15	5	6	14	ZE-15-275
2.75	20	5	6	14	ZE-20-275
3.00	10	5	6	14	ZE-10-300
3.00	12	5	6	14	ZE-12-300
3.00	15	5	6	14	ZE-15-300
3.00	20	5	6	14	ZE-20-300
3.00	30	5	6	14	ZE-30-300
3.25	15	5	6	14	ZE-15-325
3.25	20	5	6	14	ZE-20-325
3.50	10	5	6	14	ZE-10-350
3.50	12	5	6	14	ZE-12-350
3.50	15	5	6	14	ZE-15-350
3.50	20	5	6	14	ZE-20-350
3.50	30	5	6	14	ZE-30-350
3.75	15	5	6	14	ZE-15-375
3.75	20	5	6	14	ZE-20-375
4.00	10	5	6	14	ZE-10-400
4.00	12	5	6	14	ZE-12-400
4.00	15	5	6	14	ZE-15-400
4.00	20	5	6	14	ZE-20-400